

# Southwestern Herald

VOL. 1

ENID, OKLA., JULY, 1933.

NO. 1

## The Door of Opportunity Stands wide Open before You at Southwestern



**P. C. Nelson**

Yes, "Mother Bamford", as she is affectionately called, will continue with us. Sorry we do not have her picture to grace this page. William Burton McCafferty, noted as Evangelist and Bible Teacher, after a year of absence again takes his place on the Faculty. This announce-

A Whole School Year for Only \$125.  
Seven Experienced, Spirit-filled Teachers.  
A Thorough, Practical Three Years' Course.  
Students here from Sixteen States last Year.  
Rare Opportunities for Working your way Through.  
The Seventh year Will Open on the 3rd of October.

A call to service is a call to prepare. You cannot teach or preach what you know nothing about. Every minister of the Gospel should know his Bible, and how to use it effectively for the glory of God. Lack of funds may not be a barrier. If interested write us today. This school is definitely committed to do its utmost to help and encourage worth-while young men and women, upon whom the Lord has laid His hand.



**W. B. McCafferty**

ment brought joy to many who admire him. The same is true of Robert McCutchan, who returned late last year, and is to continue with us. Miss Celia Swank, who has been with us as student and then as teacher the past six years is to continue on the Faculty. Harold

Miles is to direct the Orchestra. Miss Madge Torrence will teach piano again the coming year. The President, P. C. Nelson, will devote some of his time to teaching again the coming year.

If you are in earnest, Southwestern invites you. Let us hear from you.



**Main Building**





A Southwestern Bible School Group.

**PURPOSE**

The purpose of the school is to give men and women a better knowledge of the Word of God, and to bring them into closer fellowship with Christ, and into harmony with His will for themselves, whether that be to serve Him in their own homes, on a farm, in shop or store or office, to minister in the pulpit as pastors or evangelists, or to carry the glad tidings across the seas.

Believing that the Return of our Lord is drawing very near, an earnest effort will be made to give His heralds the most essential knowledge and training in the briefest possible time.

The school has its eye especially on the Southwest as a harvest field of rare opportunity, but its vision is world-wide, and its sympathies are with every worker whom the Lord has sent into His field.

**LOCATION**

The mild climate and abundant supply of natural resources make Enid a desirable place to live. Rooms or homes can be procured at moderate rates in the vicinity of the School for those who must find accommodations outside the building.

Fourth city in one of the youngest and yet most progressive states, Enid, Oklahoma, "The City Beautiful", is the strategic place for the location of a great Christian institution.

Industrially Enid leads. Two large refineries and other factories are found here. Several grain elevators, of which two have a million bushels capacity each, show that this is the center of a prosperous agricultural region.

Enid is a transportation center. Radiating in every direction are ten railway arteries, numerous bus-lines, and long stretches of paved roads. The Meridian Highway, extending from Winnipeg, Canada, to Mexico City, and other principal highways run through the city.

The school is situated on an eminence between Cherokee and Main, and Third and Fourth streets, four blocks from the center of the city, and one block from the famous Government Springs Park.

**COURSE OF STUDY**

**Biblical Doctrines**—A careful and inspiring study in the

great fundamental doctrines in the Bible.

**Homiletics**—Studies in the preparation and delivery of sermons. Selection and analyses of texts. Outlines of sermons, presented for discussion and criticism.

**Evangelism**—The conduct of revival meetings. The need of evangelism in our day. The kind of evangelists needed. Selecting fields of labor. Music, finances, advertising, etc.

**Dispensation**—A study of the whole Bible, showing how God has dealt with mankind in the various periods of the Biblical history of the race.

**Epistles and Acts**—Studies in the Acts and the Epistles and in the Life of Paul. A thorough knowledge of this period as reflected in the Word of God will guard the student against present day errors, lead him into a clear understanding of the doctrine of Redemption, and inspire him to devote all his energies to the spread of the Gospel.

**The Life of Christ**—Systematic and comparative studies in the Gospels in the light of other portions of the Word, all reflecting the character, mission, messages, miracles, and triumphs of our Lord. The very heart of the Bible.

**Survey of the Old Testament**—Selective studies in the Old Testament, the Bible of our Lord. Creation and the beginnings of human history. God's dealings with the Chosen people, illustrative of His dealings with the Church.

**Typology**—The foreshadowing of Christ and His Bride in types, forms, shadows and ceremonies, as given in the Old Testament. A most fascinating study.

**Biblical Geography**—Topography of the Holy Land. Location and description of regions, rivers, lakes, mountains, plains, towns and villages, all throwing light on the Biblical record.

**Prophecy**—Studies of the prophecies concerning Christ already fulfilled and the predictions which are soon to come to pass. Prophecies concerning Israel and the surrounding nations. A subject of surpassing interest.

**Personal Evangelism**—or "Personal Work". How to win souls for Christ. Rules to be followed and mistakes to be avoided. The use of Scripture, and the Scriptures to use.

**Church History**—The course of church history since the days of the apostles. How errors came in. Heroes and martyrs. The Dark Ages, and the Light of the Last Days.

**Missions**—The History of missions and biography of missionaries. Preparation for effective missionary service.

**English**—Studies in grammar and rhetoric and English composition, and other common school branches for those who are deficient in these branches.

**Effective Speaking**—The object of this course in the art of public speaking, is to enable the students to express themselves, clearly, impressively, and convincingly and to teach them the proper use of the voice.

**Pastoral Theology**—A study in the Epistles of Timothy and Titus, as a guide to the character and conduct of ministers of the Gospel and a consideration of practical problems connected with the pastoral office.

**Hermeneutics**—A study in principles of correct scriptural interpretation with practical applications.

**Bible Introduction**—In this study the history of our Bible is traced from the earliest manuscripts to our present-day English versions.

**Poetical Books**—Devotional studies in Job, the Psalms, Proverbs, Ecclesiastes, and the Song of Solomon.

**Parliamentary Law**—Rules of Order, Conduct of Assemblies, Constitutions, Qualifications, and duties of officers, Church Forms, Civil law relating to the church.

**Music**—Both vocal and instrumental music are included in the course without extra charge, but small fees are charged for private lessons. As in Bible times, both vocal and instrumental music had an important place in public and private worship, so in the Pentecostal movement are a prominent feature in our work, and all workers should cultivate their gifts.

**ELECTIVES**

Students who are able to do more than the prescribed work are permitted to take one or more of the following electives:

**Spanish**—Students preparing to go as missionaries to Spanish-speaking countries, and those who expect to labor in states adjoining Mexico should take this course, which includes a study of Spanish grammar, some practice in speaking and in reading Spanish.

**Greek**—A good knowledge of this wonderful, flexible, expressive language spoken by Christ and His apostles, the original language of the New Testament, is the greatest aid to correct interpretation. The course includes a study of Greek grammar, and the reading of selected portions of the New Testament.

**Hebrew**—The language of the patriarchs and the ancient prophets and sages who wrote the Old Testament. What a privilege to see with your own eyes the Bible which our Lord Jesus used and read! The course includes the study of Hebrew grammar and the reading of sections from the Old Testament.

**SPECIAL LECTURES**

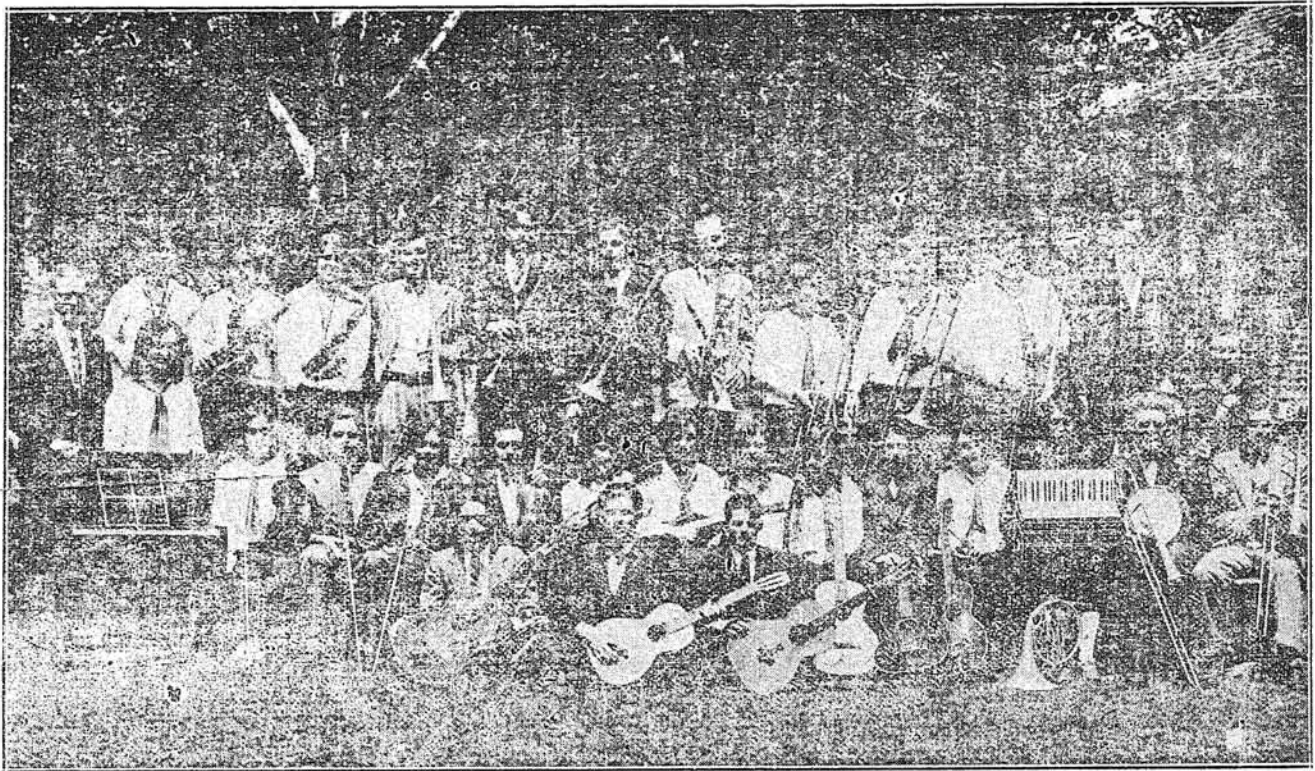
A unique feature of this school will be the presentation of several special courses of lectures by outstanding men and women who will spend from one week to three weeks each, giving the finest fruits of careful study and wide experience in the most condensed form. As a rule these visitors will address classes in the mornings, and students and the public at night. This will afford exceptional opportunities to laymen and ministers whose work will permit them to spend only limited time here.

This coming year again Dr. Lillian B. Yeomans of California is to be back and give a course of lectures.

**TEACHERS**

The Faculty consists of men and women of ripe experience and scholarship, who have caught a vision of a great need and a large opportunity. Men and women who are Spirit-filled and "on fire for God," and are willing to put their lives into the building up of this institution, and the training of men and women for the service





Music a Leading Feature at Southwestern

of Christ, and to freely give their time and strength for this labor, trusting God for their support, when they might turn their talents in other directions where they could earn good salaries.

#### METHOD

With teachers who are imbued with the evangelistic and missionary spirit and who spend part of the time in active evangelistic work, and with the co-operation of other evangelists, the students may take part of their training in the field of actual service under the instruction of evangelists in full sympathy with them and anxious to help them in every possible way to become efficient ministers of Jesus Christ.

#### CREDITS

A careful record of the subjects taken and the scholastic marks of each student will be kept. A statement showing the work completed will be given to the student at the end of each term.

At the end of each year, certificates will be publicly given to those who have taken a full year's work.

However the complete course requires three years. Diplomas will be given to those who shall satisfactorily finish the three years' course.

#### SELF-SUPPORT

While it is best for students to have resources adequate to their needs while in school, thus enabling them to give all their time and strength to their studies and school activities, we believe that exceptional opportunities are afforded students of Southwestern for earning part or all of their support while in school.

The institution is situated so near the center of a live city, that it should be possible for a number of students to find work at good wages for part of their time. Most of the classes will meet in the morning, leaving the afternoons free for study or other work.

Moreover, those who are compelled to put in full time laboring to gain support for themselves and those dependent on them, may be able to attend the special lectures at night.

#### REGULATIONS

In any well ordered home some rules are necessary. This is all the more true in an institution of this kind. It is the intention of the faculty to make only such rules as are absolutely necessary. Students are expected to cheerfully obey the rules.

Students should apply for information regarding the rules and young women students also, with regard to regulations concerning dress, to Mother Bamford, 316 E. Cherokee Ave., Enid, Okla.

#### TUITION

The school year is divided into three terms. See the Calendar. For each term a fee of ten dollars is to be paid in advance, but those who wish to pay in advance for a whole year, the fee for the three terms will be twenty-five dollars.

#### BOARD AND ROOM

Rooms and board will be provided at a much less rate than is ordinarily charged in private families. Board and room will be at the rate of \$3.50 per week, \$3.00 if paid monthly in advance. Women students will be under the care of Mrs. Annie Bamford, who will have her room and office in the building, and will be a real mother to these students. At the earliest possible moment it is planned to erect two additional buildings on the campus.

#### DONATIONS

Donations of money for the Maintenance Fund, or furniture or bedding to furnish rooms for students and classrooms, and dishes and cooking utensils for the kitchen, gifts of fruit or other eatables, books for the library, or other articles useful in a school of this kind will be most gratefully received.

Those desiring to enroll, or wishing information or any service the school can render, address the President

P. C. Nelson,

316 E. Cherokee,

Enid, Okla.